

'See How They Run'

UK Tour '06

Lighting Information & Plan

Release: 2

Production Relights: Matt Haskins

(07866536305)

Overview:

'See How They Run' does not tour a lighting rig. All lanterns, dimmers, cabling, access and control equipment must be provided by the venue (unless by prior agreement), this excludes 2no. VL1000TS and a spare. A detailed plan of equipment, its placement, circuiting and patching is provided overleaf.

Lighting Positions:

A detailed hanging plot will be provided prior to our arrival at your venue. FOH house positions required include an Advance Bar lighting position, when this is not practical these lanterns would be ideally relocated in a high auditorium slip position (generally the case). A low circle front position is also required for a single profile special.

A Proscenium boom position would also be ideal running from a height of 2.5m to 5m, if this is not possible please contact the Production Electrician (number above).

4 no. lighting stands are required on stage to light door backings, these ideally should reach a height of 3.5m. A Boom is toured to light the get off treads upstage left.

Lighting Control:

'See How They Run' tours show disks for the 500 series of lighting consoles. The show includes effect sequences, macros, moving light groups; please contact the Production Electrician if you have known difficulties with old software versions/ no Tracker software (i.e. 400 series) etc. Also, please be in contact if you don't have a 500 series desk as we will hire one in for your venue.

If possible, could the desk be placed into the stalls for plotting and notes sessions on the second fit-up day?

Gel & Gobos:

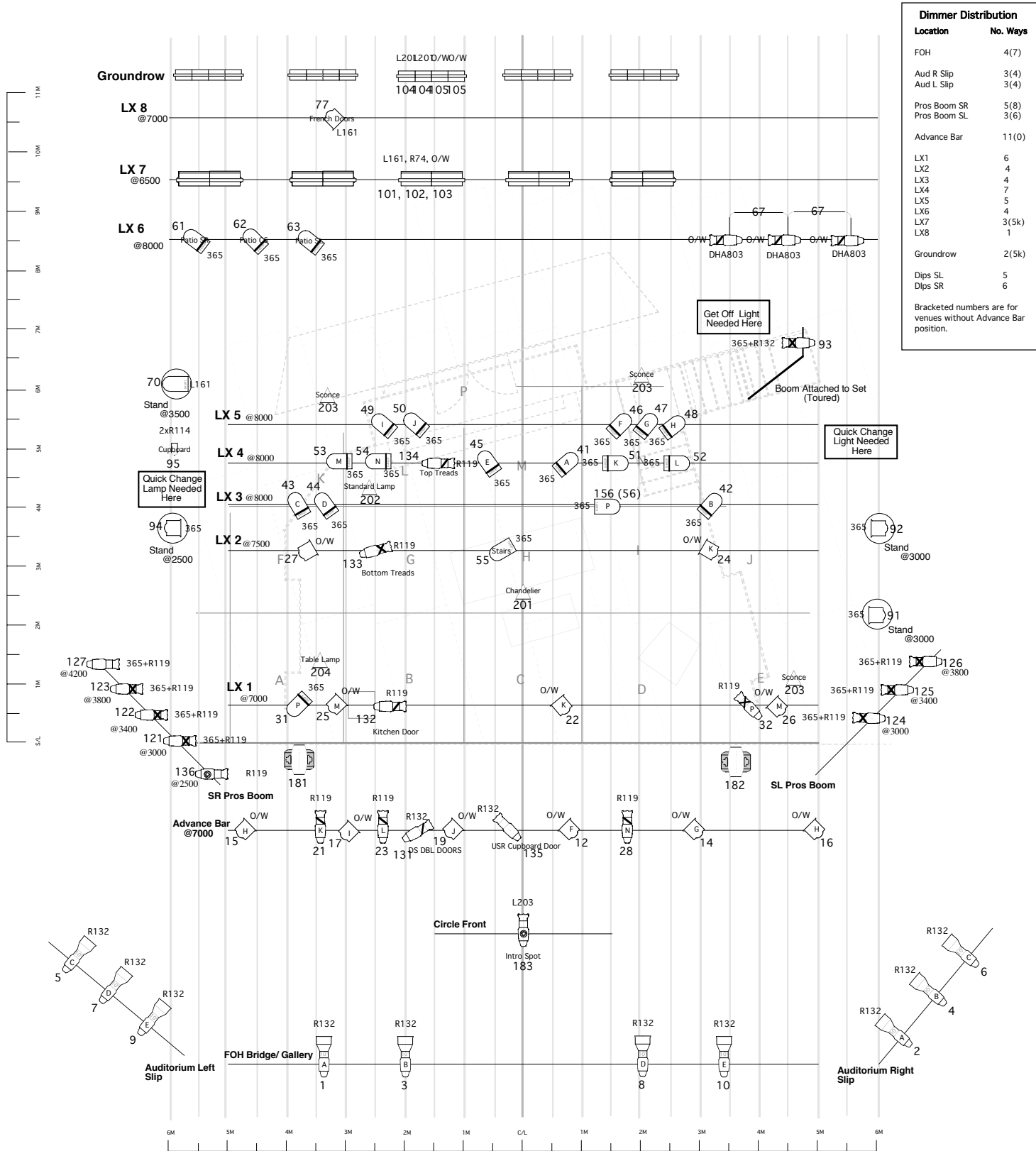
'See How They Run' tours all colour and 3 no. Gobos. Gobos are toured in 3 sizes: A, B, M, please let us know if you do not have holders that will accept these sizes.

VL1000TS:

Two VL1000TS moving lights on floor stands, are placed on the proscenium line to simulate the effect of searchlights sweeping the Tabs in the pre-set. The VLs are also supplied with hanging clamps to attach to pros boom if necessary. They are patched to run on the 500's second DMX universe, and are supplied with 5 x 20m DMX. The VLs are also provided with 15a-16a jumps for hot power & a dimmed supply for each unit, please ensure that these are packed with the units on the out.

Practicals:

There are 3 wall fittings attached to the set, two practical standard/ table lamps, and a flown chandelier. The fittings are supplied with 15-IEC jumps, please ensure that these are packed during the get-out. In some cases these practical circuits may require load lamps.



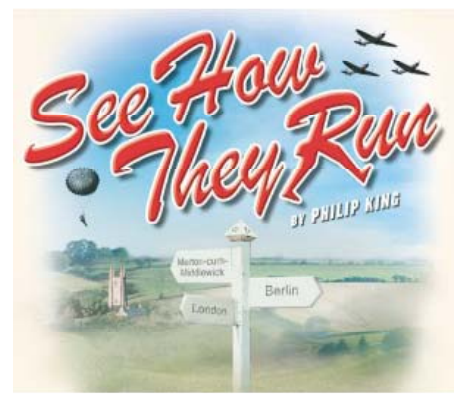
See How They Run
The Touring Partnership
 Lighting Design: Ben Ormerod
 Re-lights/ Production LX: Matt Haskins
 07886536305
 18/02/06
 Drawn: MH Revision: 2
 Narrow Pros Version Plan
 NOT TO SCALE

Please take note that this lighting design represents a visual concept only and construction suggestions. The designer is unqualified to determine structural appropriateness of the design and will not be responsible for improper engineering, construction, rigging, handling or use of designed structures and equipment. All construction MUST comply with local fire and safety regulations.

Instruments	Qty
1.2k Fresnel	15
Source 4 36deg	9
Source 4 26deg	9
Source 4 19deg	3
Source 4 10deg	10
PAR 64 CP61	18
PAR 64 CP62	3

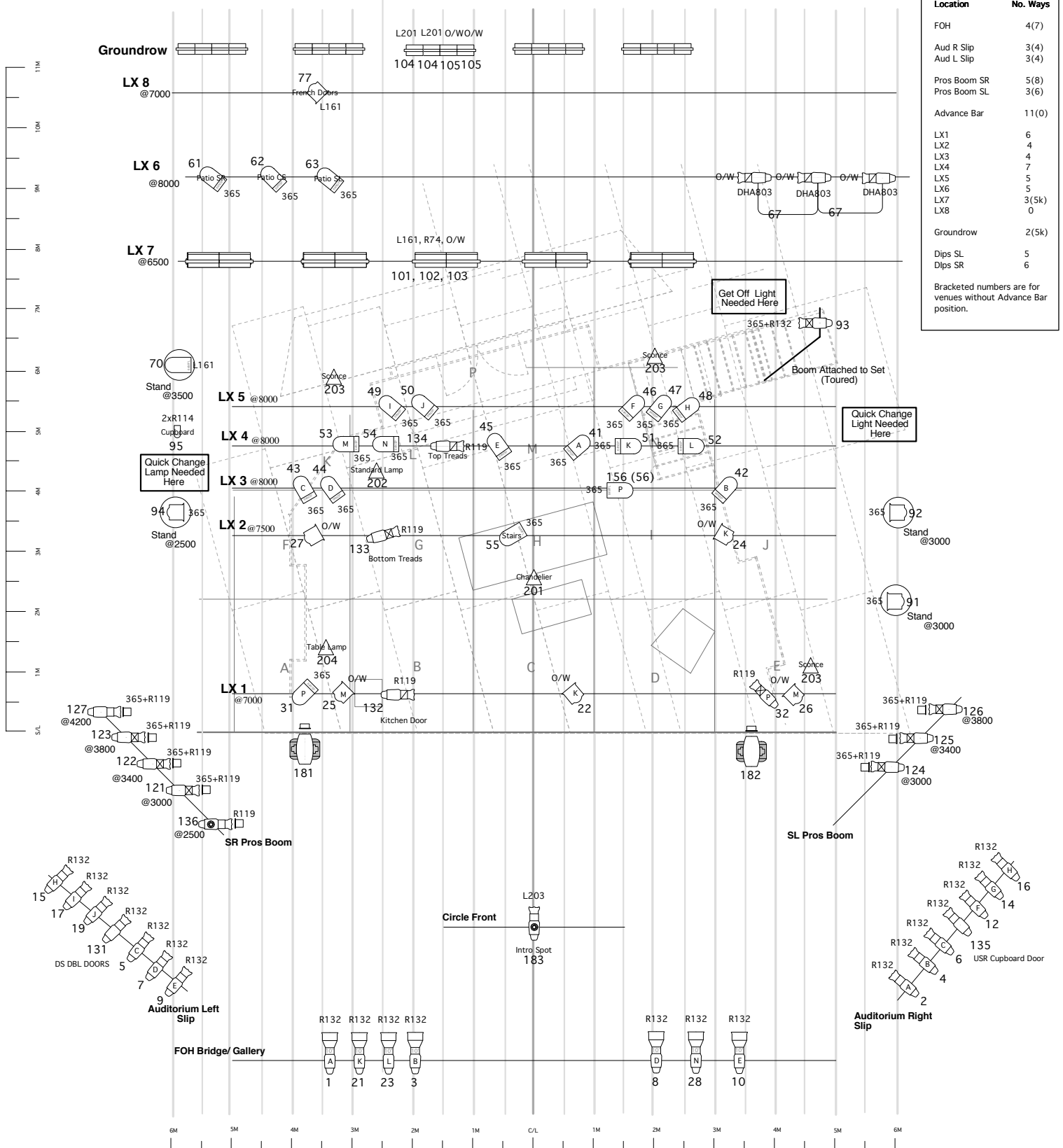
Instruments	Qty
Stand Iris 4	10
Coda 500 Left Cell	5
Practical	6
VL1000 TS	2
Accessories	Used
Ins	2

Please ensure fresnels are supplied with Barndoors. Profile types/degree options are indicative only; refer to PLX for specific house rig alternatives.



Dimmer Distribution	
Location	No. Ways
FOH	4(7)
Aud R Slip	3(4)
Aud L Slip	3(4)
Pros Boom SR	5(8)
Pros Boom SL	3(6)
Advance Bar	11(0)
LX1	6
LX2	4
LX3	4
LX4	7
LX5	5
LX6	5
LX7	3(5k)
LX8	0
Groundrow	2(5k)
Dips SL	5
Dips SR	6

Bracketed numbers are for venues without Advance Bar position.



See How They Run
The Touring Partnership
 Lighting Design: Ben Ormerod
 Re-lights/ Production LX: Matt Haskins
 07866536305
 18/02/06
 Drawn: MH Revision: 2.2
 Narrow Pros (Richmond) Version Plan
 NOT TO SCALE

Please take note that this lighting design represents a visual concept only and construction suggestions. The designer is unqualified to determine structural appropriateness of the design and will not be responsible for improper engineering, construction, rigging, handling or use of designed structures and equipment. All construction MUST comply with local fire and safety regulations.

Instruments	Qty
1.2k Fresnel (Selecon F Unless stated)	15
Source 4 36deg	9
Source 4 26deg	9
Source 4 19deg	3
Source 4 10deg	10
PAR 64 CP61	18
PAR 64 CP62	3

Instruments	Qty
Stand Iris 4	10
Coda 500 Left Cell	5
Practical	6
VL1000 TS	2
Accessories	Used
⊙ Iris	2

Please ensure fresnels are supplied with Barndoors. Profile types/degree options are indicative only; refer to PLX for specific house rig alternatives.

